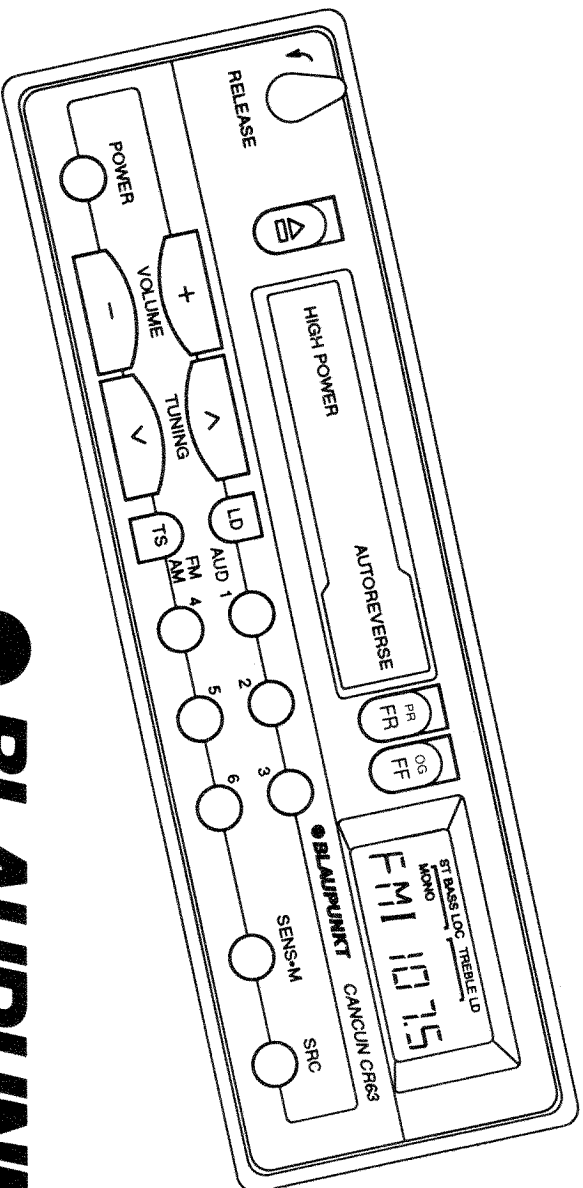


# CANCUN CR63

High-Power FM/AM/Cassette Receiver with Detachable Face  
Récepteur-cassette stéréo FM/AM avec panneau avant amovible  
Rádio FM/AM e Toca-Fitas com Painel Removível  
Receptor FM/AM con Tocacassette de Frente Desmontable



**BLAUPUNKT**

Bosch Telecom

## DETACHABLE FACE

**Detaching and Attaching the Face:**  
The face of this unit can be detached and taken with you to prevent it from being stolen.

**Detaching the Face:**

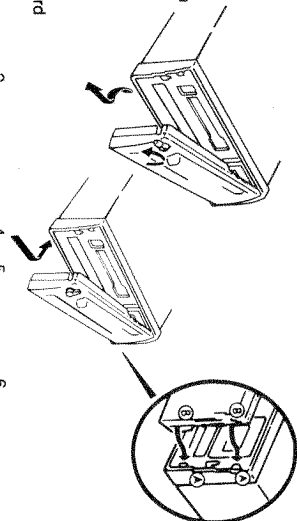
Before detaching the face, be sure to press the Power Button (7) off first. Then turn the Release Knob and detach the face by gently pulling it towards you as illustrated.

**Note:** Be sure to pull it 1/2 inch or more to the left. Do not pull it straight out from the chassis. Be sure not to drop the face when detaching it from the chassis.

**Attaching the Face:**

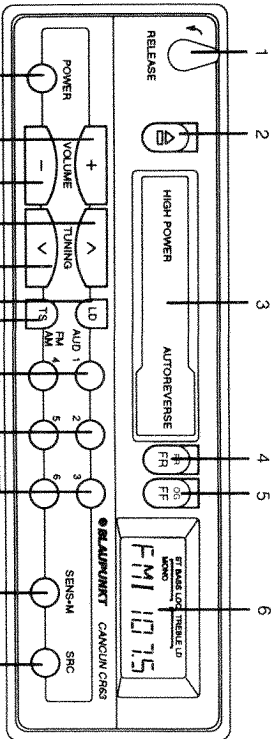
Apply the right hand side of the face to the chassis by sliding (part B) of the face to (part A) at the front of the chassis. Gently push the left side of the face against the front of the chassis until it snaps into place.

**Note:** Make sure that the face is inserted right side up. Do not press against the display window. Do not press hard against the face when attaching it to the chassis, it may be easily attached with gentle pressure.



## LOCATION OF CONTROLS

1. Release Lever
2. Tape Eject Button
3. Cassette Loading Slot
4. ▲▶/PR (Tape Fastwind/Program Switch) Button
5. ▶▶/OG (Tape Fastwind/Program Switch) Button
6. LCD Display:
- Volume Mode Indicator
- Bass and Treble Mode Indicator
- Balance Mode Indicator
- Frequency Display
- Stereo Indicator
- Mono Indicator
- Local Indicator
- Left/Right Indicator
- Loudness Indicator
- Power/Volume-Level Memory Button
8. + Control: Volume (+)
- Bass (+)
- Treble (-)
- Balance Right
- Fader Front
9. - Control: Volume (-)
- Bass (-)
- Treble (-)
- Balance Left
- Fader Rear
10. Up Tuning Control: Automatic
- Manual
11. Down Tuning Control: Automatic
- Manual
12. AUD (Audio Select)/ LD (Loudness) Button:
- Volume Mode
- Balance Mode
- Bass Mode
- Treble Mode
- Fader Mode
- Loudness Control
13. FM/AM (Band Select)/ TS (Travel Store) Button
14. FM/AM/TS Preset Buttons
15. SENS\* M (Sensitivity/Mono) Button
16. SRC (Source) Button



## FEATURES

Congratulations on your purchase of the Blaupunkt Cancun CR63 FM/AM Auto-Reverse Cassette Receiver. Its Phase Locked Loop (PLL) quartz FM tuner and high-quality tape head provide the ultimate in sound reproduction. The Travel Store feature allows you to automatically load six receivable FM and six receivable AM stations into the tuner's presets as you travel through various reception areas.

- Electronically-tuned PLL Tuner
- 12 FM/6 AM Station Presets
- FM and AM Travel Store
- Automatic and Manual Tuning
- Local/Distant Reception Control
- Auto-Reverse Cassette Mechanism
- Auxiliary Input for Portable CD Player
- Volume/Balance/Fader Controls
- Electronic Volume Level Memory
- Separate Bass and Treble Controls
- Loudness Control
- LCD Display
- Night Illumination
- 2 x 25 + 2 x 7 Watt Integrated Amplifier
- Fader with 4 Speaker Output
- 2 Channel Pre-Amp Output
- DIN Mounting Chassis
- Power Connection for Antenna Motor
- Includes Mounting Strap and Wire Harness
- ASU Impulse Noise Quieting

Your Cancun CR63 also incorporates a detachable front faceplate which makes the unit useless to would-be thieves.

## INSTALLATION (IN-DASH MOUNTING)

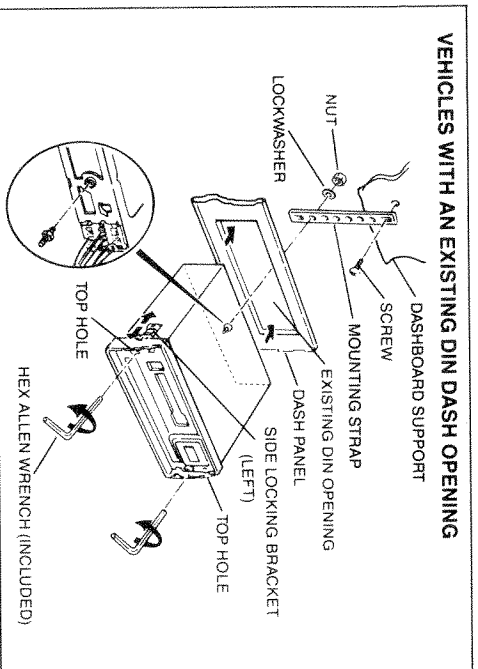
### GENERAL SPECIFICATIONS

- Power Requirement: 12.0 VDC (11-16 VDC)  
Operating Voltage: Negative  
Grounding System: 178 x 50 x 150mm (7 x 2 x 6 in)  
Dimensions:  
Design and specifications subject to change without notice.

The illustration shows a typical installation, however, you may need to adjust your installation, depending on the vehicle and the unit. We recommend making and testing all electrical connections before installation.

If you have questions or need additional installation hardware, consult your Blaupunkt dealer.

Be sure to detach the face before you start to connect or install the unit.



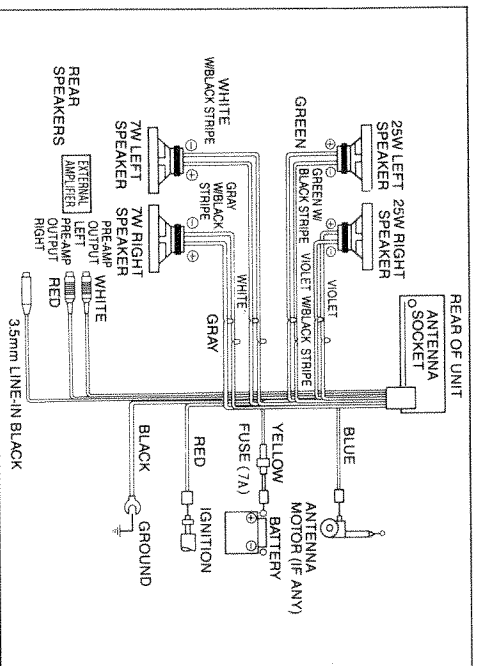
## ELECTRICAL CONNECTIONS

### Power Connections—To prevent short circuits and/or serious damage:

- Disconnect the vehicle battery's negative terminal before making connections.
- Use this unit only with negative ground 12 Volt (11-16 Volt) direct current (DC).
- Connect leads according to the wiring diagram.
- The blue lead for triggering a motorized antenna can also be connected to the appropriate input on an external amplifier to turn it on. (Don't connect this lead to the power input on an amplifier or anything else.) The combined total amperage required by the motorized antenna and anything else activated by this lead must not exceed 100 mA.
- Connect the black lead to a grounded metal part of the vehicle. We recommend grounding all audio system black ground leads (head unit, external amplifier, etc.) to a common ground point.

### Speaker Connections—To prevent short circuits serious damage to the unit and/or speakers:

- Don't ground the negative speaker leads (or pre-amp outputs) to a metal part of the vehicle.
  - Use speakers with 4 ohms minimum impedance that have adequate power-handling capabilities.
  - Connect the speaker leads according to the wiring diagram.
  - Don't connect more than one speaker (regular, co-axial or tri-axial) to each pair of speaker leads.
  - Don't connect any active speakers (speakers with built-in amplifiers) to the speaker leads.
  - Don't connect the left and right speaker leads to each other or to the same speakers.
  - Don't connect the front and rear speaker leads to each other or to the same speakers.
- Connections To External Amplifier(s)**
- You can connect the 2 pre-amp channels to external amplifiers (available separately). Following the amplifier's instructions, connect each Cancon preamp output to the amplifier and connect a rear speaker directly to the amplifier. A second pair of speakers (with adequate power-handling capabilities) can be connected to the 25W speaker leads.



## OPERATION

### GENERAL OPERATION

#### Power-On

- Press Power Button (7)—car ignition must be on.

#### Volume

- Press the +/– Controls (8 & 9) to increase or decrease the volume to the desired level. The volume level is indicated in the LCD Display (6). Two seconds after you complete your adjustments, the display reverts to showing the sound source.

#### Electronic Volume-Level Memory

- First, adjust the volume to the desired volume level, as indicated previously. Press and hold the Power Button (7) for more than 2 seconds. The unit turns off and the volume level is memorized. When the unit is turned on, the volume will be at the memorized level, even if the unit was turned off at a higher level. However, if the unit is turned off when the volume level is lower than the stored Electronic Volume-Level Memory, when the unit is turned back on, the volume will be at the lower level.

#### Loudness Control

- Press and hold the LD Button (12) for more than 2 seconds to activate the loudness function. The sound level of the low frequencies will be increased to compensate for lower listening levels.
- The "LD" symbol will illuminate in the display.
- To deactivate, press and hold the LD Button (12) again for more than two seconds. The "LD" indicator will go off in the display.

#### Bass and Treble

- Press AUD (Audio Select) Button (12) once to select the Bass mode, twice for the Treble mode. The active mode is indicated in the LCD Display (6) by the blinking level indicator. Press the + Control (8) or – Control (9) to increase or decrease the level of the blinking mode. Two seconds after you complete your adjustments, the display will revert back to showing the sound source.

#### Balance

- Press AUD (Audio Select) Button (12) to select the Balance mode. The balance is indicated in the LCD Display (6). Press the + Control (8) to increase the Right speaker output or press the – Control (9) to increase the left speaker output to the desired level. Two seconds after you complete your adjustments, the display will revert back to showing the sound source.

#### Fader

- Press AUD (Audio Select) Button (12) to select the Fader mode. The level of output for front and back speakers is indicated in the LCD Display (6). Press the + Control (8) to increase the front speaker output. Press the – Control (9) to increase the rear speaker output. Two seconds after you complete your adjustments, the display will revert back to showing the sound source.

#### SRC (Source) Button

- Press the SRC (Source) Button (16) to switch between the sound sources: radio, tape, and the auxiliary input for a portable CD player.

### RADIO OPERATION

#### Band Selection

- Press the FM/AM (Band Select) Button (13) to select FM1-FM2/AM sequentially. When the button is pressed, the indicator "F1", "F2", or "A" appears in the display for 2 seconds before showing the radio frequency being received.

#### Travel Store Function

- Use the FM/AM (Band Select) Button (13) to select the AM or FM2 band. To use the Travel Store feature, press this button (13) again for more than 2 seconds. The unit automatically scans the selected band beginning with the frequency and preset currently displayed. The next six receivable stations will be automatically stored under AM or FM2. The station presets on other bands will not be affected.

#### SENS (Sensitivity)

- Press the SENS/AM Button (15). "LOC" will be shown in the display. If "LOC" (Local) is displayed, search tuning stops only at strong local stations. If "LOC" (Local) is not displayed, search tuning stops at ALL receivable stations, weak or strong.

#### **MONO (Monaural FM Reception)**

- If the FM stereo program is weak and noisy, press the SENS\***M** Button (15) for more than 2 seconds. The program will be received in monaural mode, eliminating the noise. "MONO" will appear in the display.

#### **Automatic Seek Tuning**

- Press the FM/AM (Band Select) Button (13) until the desired band—"F1", "F2", or "A"—appears in the display. After two seconds, the display reverts to showing the radio frequency. Press the Tuning Controls [up (10)/down (11)] less than 1/2 second to seek the next receivable station. [To change the tuning sensitivity to local or distant, press the SENS\***M** (Sensitivity) Button (15). In the local mode, the tuner will only tune to strong stations. In the distant mode, no indicator appears and the unit will tune to all possible stations.]

#### **Manual Tuning**

- Press the Band Select Button (13) until the desired band appears in the display. Press and hold the Tuning Control [up (10)/down (11)] for more than 1/2 second. The frequency will go in the direction pressed. Two seconds after you complete your adjustments, the Tuning Control reverts to Automatic Seek Tuning.

#### **Preset Tuning**

- Up to 12 FM and 6 AM stations can be stored in preset memory.
- Tune in a desired FM1, FM2, or AM station, either manually or automatically as instructed above.
- Press and hold any one of the six Preset Buttons (14).
- The audio output will be temporarily muted.
- After 2 seconds, the chosen station will be stored in memory on the Preset Button and band you have chosen.
- The Preset Button number will appear in the display and the audio will resume to confirm memory storage.
- Repeat the above procedure with the rest of the presets until all six buttons have been fully programmed.
- To select a preset station, select the desired band, then press the desired Preset Button lightly.

#### **CASSETTE OPERATION**

##### **Cassette Tape Play**

- Turn unit on (car ignition must be on).
- Insert cassette into Cassette Door (3). Note: Make sure that the side of the cassette with the tape exposed is facing to the right side and that all slack has been removed from the tape prior to insertion.
- The insertion of the cassette will automatically override the radio and the cassette will begin to play. When the cassette deck is being used, "—" or "←" will appear in the LCD depending on which tape program is active.

##### **Auto-Reverse Tape Function**

- **Automatic:** When the end of the tape (side A or B, program 1 or 2) is reached, the tape will automatically reverse direction and play the other side of the tape. Note: The tape will continue to play until ejected, until the radio or CD player is selected using the SRC Button (16), or until the unit has been turned off.
- **Manual:** To reverse tape direction during play, press both tape program selector buttons [PR (4) and OG (5)] at the same time. (PROG is short for program.) The tape direction indicator in the display will change confirming the change in tape direction.

##### **Fast Winding of Tape**

- To rewind tape press the FR Button (4).
- To advance tape press the FF Button (5).
- To stop fast winding, lightly press whichever tape program selector button [FR (4) or FF (5)] is still extended. The other button will release and the winding will stop.

##### **Ejecting Tape**

- Depress the Tape Eject Button (2) completely towards the face of the unit. The tape will be ejected and the radio will play.

#### **AUXILIARY JACK INPUT**

An auxiliary input jack that allows you to connect portable audio equipment with 3.5mm connectors is located at the back of the unit. To play CDs through your car audio system, simply plug your portable CD player into the jack and use the SRC (Source) Button (16) to select the auxiliary jack as the active sound source. When the auxiliary jack is the sound source, "AU" will appear in the LCD display.